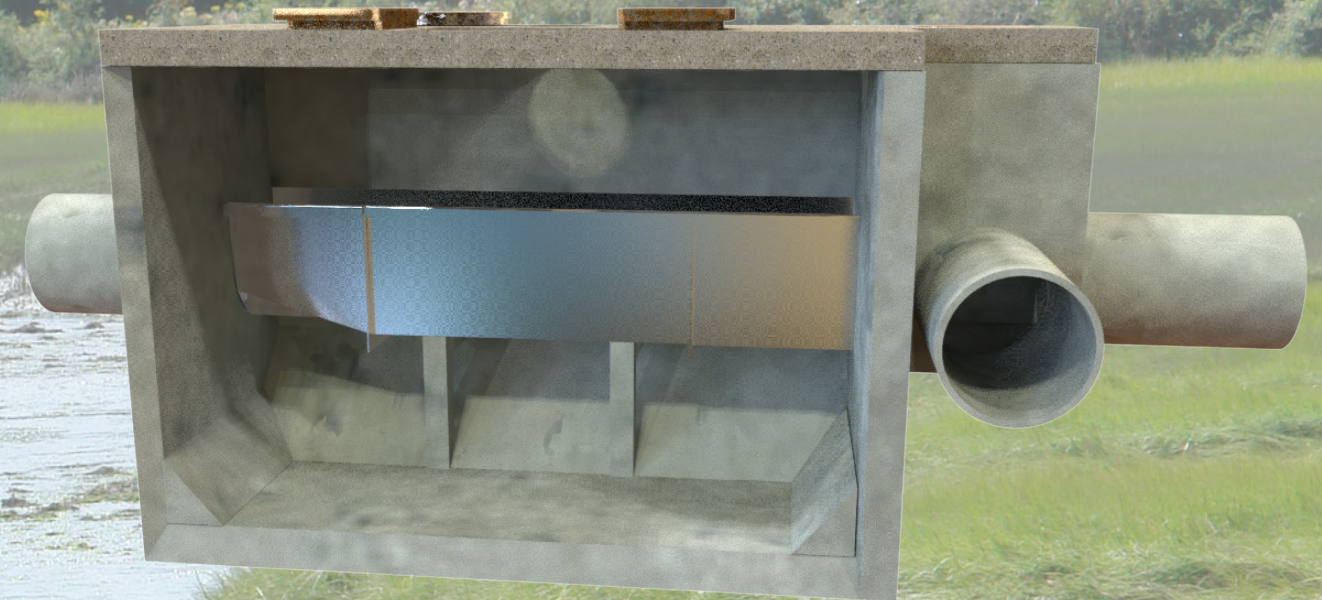


## TECHNICAL PIT BED LOAD SEDIMENT TRAP



### Standard equipment

Sewer plug in cast iron  
diameter : 600 mm



Sewer plug with trap 750/2000 mm  
(subject to availability)



### Option

Sewer plug with removable security barrier  
Several models on request

### Our services

- Design studies
- Hydraulic sizing
- Elaboration plans of engineering and project management
- Delivery and installation of prefabricated elements by crane

### HYDRASS FRANCE

Head office :

51 chemin du Grand Champ  
69890 La Tour de Salvagny

(+33) 4.78.48.83.94

(+33) 6.74.57.81.34

## Protect your installations against silting

The technical pit is intended to replace the grit chamber. She assures the same function but does not trap either muds, or fats. She is not submitted to the dropping of stored sediments, noticed during rainy events. She reduces the risks bound to the H<sub>2</sub>S.

Website <http://hydrass.eu>  
[siko.b@wanadoo.fr](mailto:siko.b@wanadoo.fr)



The sand-trap action is based on the storage time of the effluents.

The technical pit does not trap either muds or fats. She is not submitted to the dropping of stored sediments, noticed during rainy events.



1

The upstream and the downstream are connected by a gutter



2

At the bottom of the gutter, there is an opening of precise dimensions



3

the hatch is open to trap the minerals



4

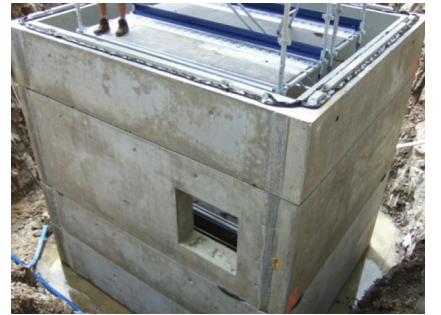
The hatch is closed to empty the pit

## Different models depending on required use

Small stainless steel model for reed stations or small networks



Prefabricated model for medium network in shallow depth



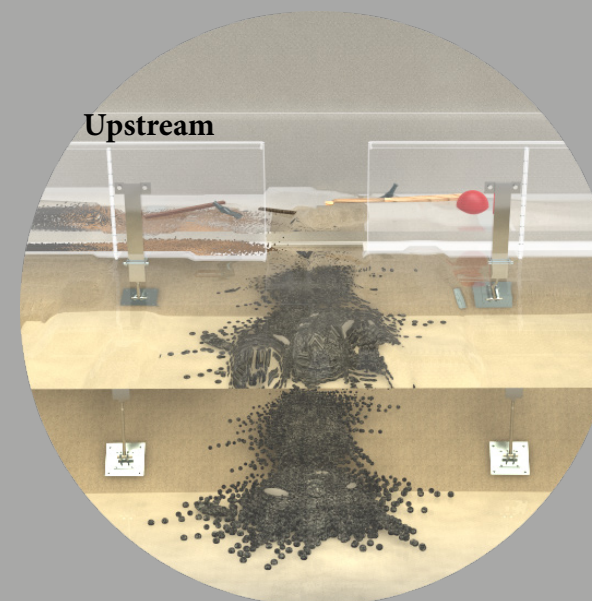
Cast concrete model on site



Transformation of a sand-trap into a technical pit (rehabilitation)



## Principle of operation



Upstream

The upstream gutter carries mineral, organic and floating objects.

The opening in the gutter calculated with the effluent velocity captures only the minerals.

In case of heavy rain with the small opening there is no emptying of the mineral materials. In addition, the concrete bevels remove the material from the flow.